



## Tick Research Lab of Pennsylvania

in partnership with East Stroudsburg University

**Dr. Jane Huffman**

**Wildlife Genetics Institute**

Tick Research Lab of PA

562 Independence Rd,  
Suite 114

East Stroudsburg, PA 18301

### CONTACT

---

PHONE:

**570-422-7892**

WEBSITE:

[Ticklab.org](http://Ticklab.org)

EMAIL:

[wildlifedna@esu.edu](mailto:wildlifedna@esu.edu)

### Public Hearing on Ticks and Lyme disease

East Stroudsburg University Innovation Center

September 20<sup>th</sup>, 2022

Dear Senate Health and Human Services Committee,

The PA Tick Research Laboratory of East Stroudsburg University would like to extend their gratitude for your continued support towards Lyme disease and tick research. The grant funds received by the PA Department of Health have supported the ability to offer free tick testing to all PA residents and further tick research among the Commonwealth. This program has raised the awareness of the risk associated with a tick bite. Additionally, this program has given our residents and physicians an early diagnostic tool to understand a patient's exposure and risk for a tick-borne disease.

Our laboratory specializes in detecting the DNA and RNA of over 25 tickborne diseases, which includes Lyme disease, Anaplasmosis, Rocky Mountain spotted fever, Powassan virus and more. All tick testing results are reported and tracked live on our website, [ticklab.org](http://ticklab.org). We have summarized our testing data included in this packet. This program is an essential tool in combating the health crisis associated with the bite of a tick by providing significant data to patients, physicians and the Commonwealth.

Within this packet, you will find our resources, which includes a brochure, pocket tick card and a summary of data collected on ticks in PA. Additional resources can be requested by calling or e-mailing us.

Thank you,

*Nicole Chinnici, MS, CWFS*

Director

Dr. Jane Huffman Wildlife Genetics Institute

PA Tick Research Lab of

East Stroudsburg University

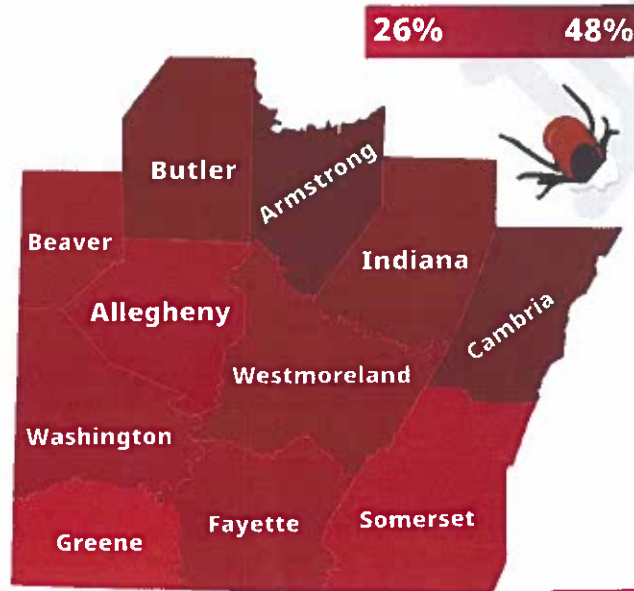
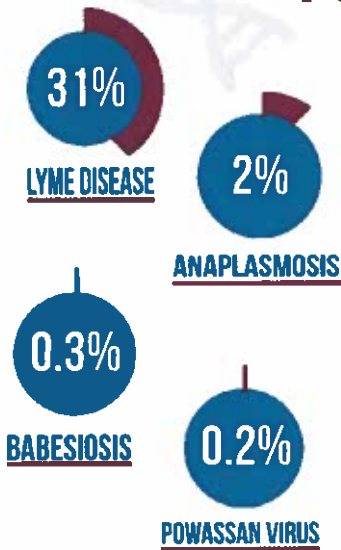


**EAST  
STROUDSBURG  
UNIVERSITY**

# TICKBORNE DISEASES IN PA

## Do You Know How This Affects Your COUNTY?

### PERCENT OF BLACKLEGGED TICKS TESTING POSITIVE IN YOUR REGION!



### TICK BEHAVIOR

THE BLACKLEGGED TICK IS THE MOST COMMON TICK BITE IN PA!

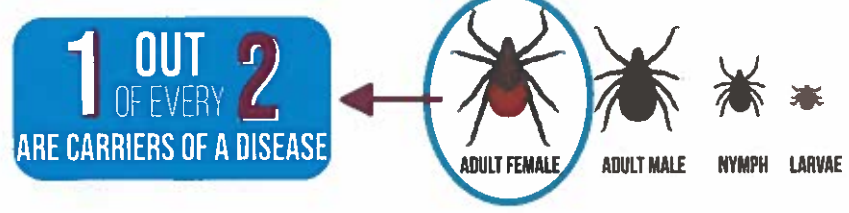
### HIGHEST ACTIVITY



### LYME DISEASE AVG CASES

**165.9**  
PER 100,000 IN YOUR REGION

### TICK ID GUIDE BLACKLEGGED (DEER) TICK

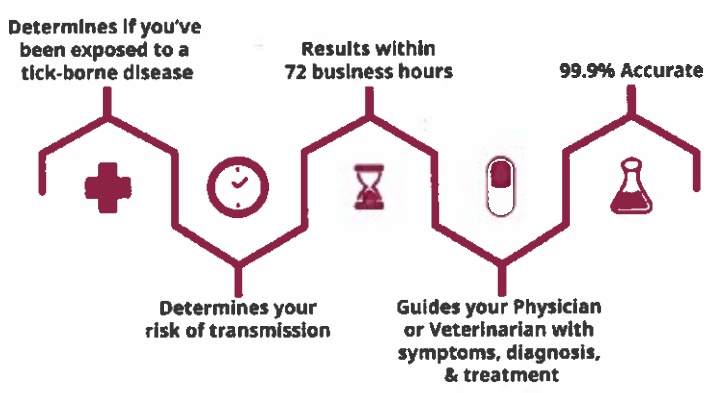


## FREE TICK TESTING AVAILABLE FOR PA RESIDENTS, TICKLAB.ORG

### HOW TO SUBMIT A TICK



### 5 REASONS TICK TESTING IS IMPORTANT!





## TICK ACTIVITY

Nymph ticks are considered the most dangerous due to their size. Most individuals do not see these ticks until they have attached and engorged with blood. Lyme disease transmission can occur between 18-24 hours and Powassan virus in 15 minutes. On average, nymph ticks are attached and feeding for 26 hours compared to 22 hours for Adult female ticks. The longer the tick is attached, the greater your risk for disease transmission.

### 22 Hours

Average length of time an Adult female Blacklegged tick is attached and feeding

### 26 Hours

Average length of time a Nymph Blacklegged tick is attached and feeding

### Other tick species common in Pennsylvania

7,236

Am. Dog Ticks  
(*Dermacentor variabilis*)

1,257

Lone star Ticks  
(*Amblyomma americanum*)

193

As. Longhorn Ticks  
(*Haemaphysalis longicornis*)

122

Ground Hog Ticks  
(*Ixodes cookei*)



### Emerging Pathogens of Concern in Pennsylvania

17.5%

Babesia odocoilei

<1.0%

Heartland virus

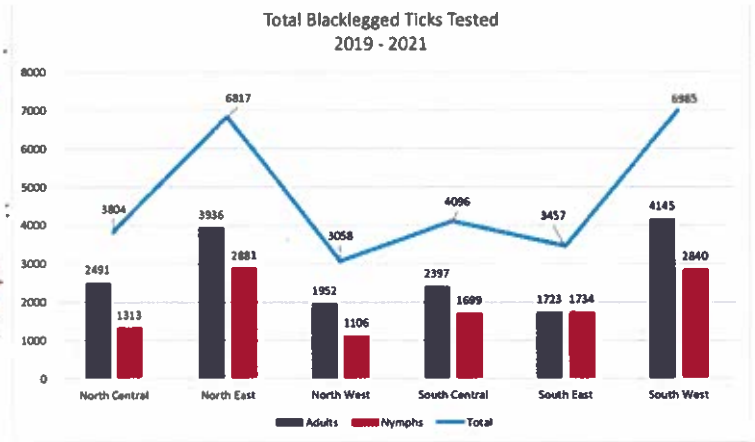
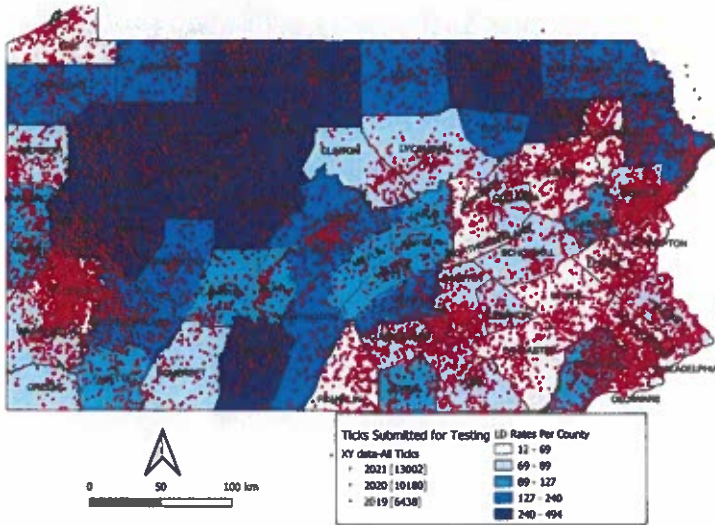
### ALERT

OVER 50% OF TICK BITES OCCURED ON RESIDENTIAL PROPERTIES

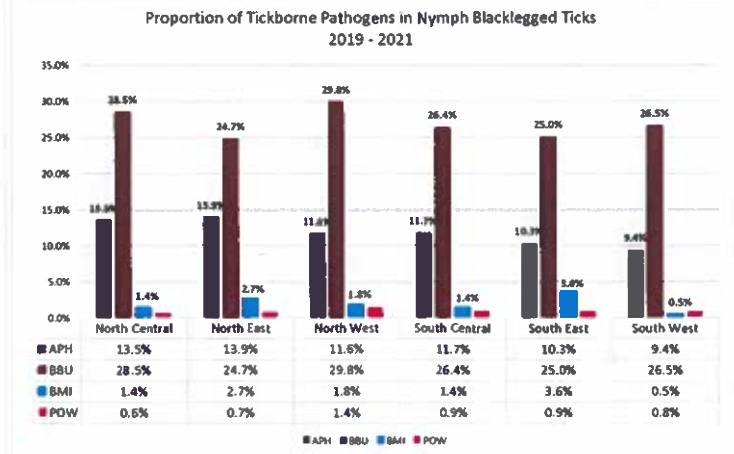
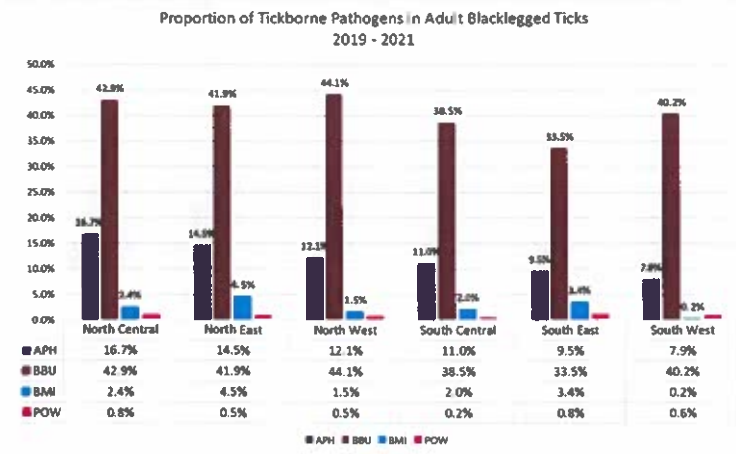
CHILDREN AGES 2-10  
ARE AT GREATEST RISK

MOST COMMON ACTIVITY FOR EXPOSURE  
PLAYING IN THE YARD  
&  
YARD WORK

**TICKBORNE PATHOGENS IN PENNSYLVANIA**  
2019 - 2021 Summary



A total of 28,217 Blacklegged (*Ixodes scapularis*) ticks were submitted to the PA Tick Research Lab for testing between April 1, 2019 and December 31, 2021.



**Adult Blacklegged Ticks**

**40.2%** Lyme disease    **11.9%** Anaplasmosis    **2.3%** Babesiosis    **0.6%** Powassan virus

**Nymph Blacklegged Ticks**

**26.8%** Lyme disease    **11.6%** Anaplasmosis    **1.9%** Babesiosis    **0.9%** Powassan virus